



# TOP-TOUCH ELECTRONICS CO., LTD

## Sample Approval

Supplier Name: Top-Touch Electronics Co., ltd

Supplier Address: Shenyue Industry Zone, Li quang Village, Guan lan Town, Bao'an District, Shenzhen, China

Part Number: TTW4190003

Model:

Description: 4 Wires Resistive Type

Top-Touch Approve:

Engineering	Technology	QA	Sales	Approve	Remark

Customer Approve:

Engineering	QA	Project Management	Other

## **4 Wires Touch Panel Product Specification**

Structure : PET-----Glare hard coating & Anti-Newton Ring  
Glass----- ITO glass1.8mm  
Dot Pitch-----5.0mm×5.0mm  
Connector: FPC(4-Pin)

### **General Specifications:**

Item	Specifications	Unit
Dimensional Outline	426.4 (L) ×266.5.00 (W)	mm
Viewing Area	410.4(L)×256.5(W)	mm
Active Area	406.4(L) ×252.5(W)	mm

		<b>Touch Panel Specification</b>	<b>Issue No.</b>		
<b>SET</b>	<b>Index</b>		<b>Page</b>	<b>1</b>	
	1. Index	. . . . .	01		
	2. Apply To Specification	. . . . .	02		
	3. Dimension	. . . . .	03		
	4. Optical Performance	. . . . .	04		
	5. Electrical Performance	. . . . .	04		
	6. Trust Test	. . . . .	05	06	
	7. Appearance Inspection Standard	. . . . .	07		
	8. Packing & Others	. . . . .	08		
<b>AMEND NO</b>		<b>TOP-TOUCH ELECTRONICS CO., LTD</b>	<b>APPROVAL BY</b>	<b>CHECK BY</b>	<b>PREPARE BY</b>
<b>AMEND DATE</b>					
<b>PUBLISH DATE</b>					

	<b>Touch Panel Specification</b>	<b>Issue No.</b>	
<b>SET</b>	<b>Apply To Specification</b>	<b>Page</b>	<b>2</b>

**1. Suitability**

This specification suit analog resistance touch panel. Which used in LCD module.

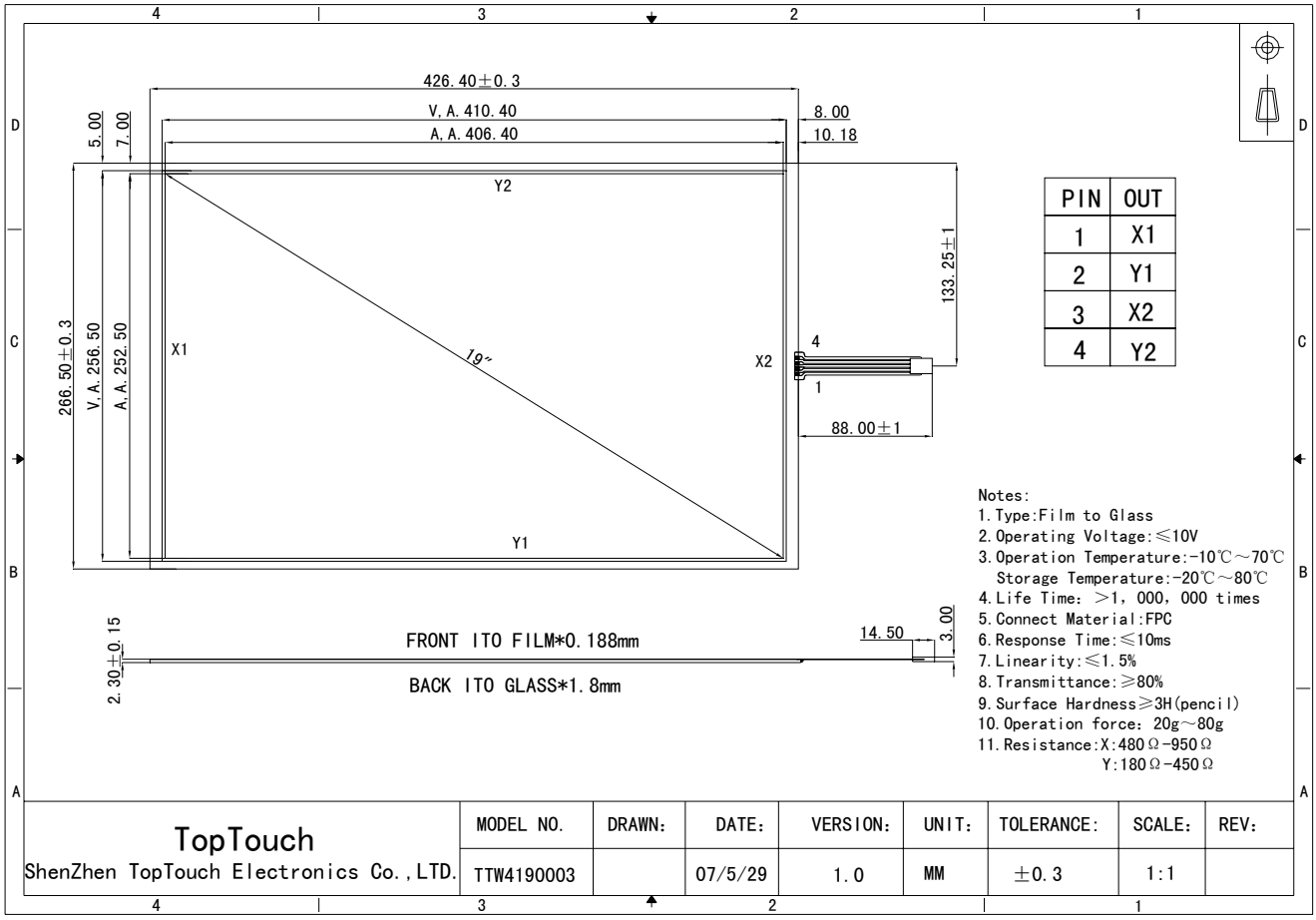
**2. Apply To Specification**

- 2.1 Surface Hardness: 3H
- 2.2 Optical Clarity: 80%↑
- 2.3 Operating Temperature: -10°C ~ 60°C
- 2.4 Endurance Test strikes: Over 1 million
- 2.5 Operating Voltage: DC5V
- 2.6 Resistance: 200Ω ~ 900Ω
- 2.7 Linearity : <1.5%
- 2.8 Faceplate Surface: Anti-glare coating
- 2.9 Operation Pressure: 15 ~ 70g
- 2.10 Storage Temperature: - 20°C ~ 70°C
- 2.11 Message Noise: 5 m sec ~ 15 m sec
- 2.12 Operating Current: 5mA ~ 25mA
- 2.13 Isolation Resistance: 20MΩ↑ @ DC 25V

**3. Dimension Size**

Refer diagram I

AMEND NO		<b>TOP-TOUCH ELECTRONICS CO., LTD</b>	APPROVAL BY	CHECK BY	PREPARE BY
AMEND DATE					
PUBLISH DATE					



Model No.				TOP - TOUCH ELECTRONICS CO.LTD	Unit: mm	DATE:	
						Amend Date:	

	<b>Touch Panel Specification</b>	<b>Issue No.</b>			
<b>SET</b>	<b>Optical &amp; Electrical</b>	<b>Page</b>	<b>4</b>		
<p><b>4. Optical Performance</b>  Light transparency should keep above 80%↑ under the visible wave when the wave length is 550mm.</p> <p><b>5. Electrical Performance</b></p> <p>5.1 Connector Resistance  300Ω &lt; X Axis &lt; 900Ω  200Ω &lt; Y Axis &lt; 800Ω</p> <p>5.2 Insulation Resistance  20MΩ↑ @ DC 25V</p> <p>5.3 Electrostatic Endurance  No abnormal appearance after 10kv, 100Ω, 250PF electrostatic used.</p> <p>5.4 Linearity  X Axis : 1.5% ↓  Y Axis : 1.5% ↓</p> <p>5.5 Operating Voltage  3V ~ 12V DC</p> <p>5.6 Operating Current  5mA ~ 25mA °</p>					
AMEND NO		<b>TOP-TOUCH ELECTRONICS CO., LTD</b>	APPROVAL BY	CHECK BY	PREPARE BY
AMEND DATE					
PUBLISH DATE					

**6. Environment Test**

**6.1 High Temperature Test**

After putting panels at 70°C for 240 hours, then leaving for 24 hours at room temperature.

- A. Resistance between leads
  - 300Ω < X Axis < 900Ω
  - 200Ω < Y Axis < 800Ω
- B. Linearity
  - X Axis : ±1.5%↓
  - Y Axis : ±1.5%↓
- C. Insulation Resistance
  - 20MΩ↑ @ DC25V

**6.2 Low Temperature Test**

After putting panels at -20°C for 240 hours, then leaving for 24 hours at room temperature.

- A. Resistance between leads
  - 300Ω < X Axis < 900Ω
  - 200Ω < Y Axis < 800Ω
- B. Linearity
  - X Axis : ±1.5%↓
  - Y Axis : ±1.5%↓
- C. Insulation Resistance
  - 20MΩ↑ @ DC25V

**6.3 Temperature and Humidity Test**

After putting panels at 40°C, 90%RH for 240 hours, then leaving for 24 hours at room temperature.

- A. Resistance between leads
  - 300Ω < X Axis < 900Ω
  - 250Ω < Y Axis < 800Ω
- B. Linearity
  - X Axis : ±1.5%↓
  - Y Axis : ±1.5%↓
- C. Insulation Resistance
  - 20MΩ↑ @ DC25V

<b>AMEND NO</b>		<b>TOP-TOUCH ELECTRONICS CO., LTD</b>	<b>APPROVAL BY</b>	<b>CHECK BY</b>	<b>PREPARE BY</b>
<b>AMEND DATE</b>					
<b>PUBLISH DATE</b>					

# Touch Panel Specification

Issue No.

SET

Reliability Test

Page

6

## 6.4 Repetition of High and Low Temperature and Test

After putting panels at the condition of  $-20^{\circ}\text{C}$  for 30 minutes and then  $70^{\circ}\text{C}$  85%RH for 30 minutes and this process is repeated by 20 cycles , then leaving for 24 hours at room temperature.

A. Resistance between leads

$300\Omega < \text{X Axis} < 900\Omega$

$200\Omega < \text{Y Axis} < 800\Omega$

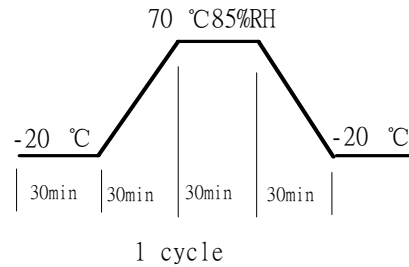
B. Linearity

X Axis :  $\pm 1.5\%$ ↓

Y Axis :  $\pm 1.5\%$ ↓

C. Insulation Resistance

$20\text{M}\Omega$ ↑ @ DC25V



## 6.5 Punching Life

After punching 1,000,000 times with the R8.0 silicon rubber Force : 60g , Speed : 5/sec

A. Resistance between leads

$300\Omega < \text{X Axis} < 900\Omega$

$200\Omega < \text{Y Axis} < 800\Omega$

B. Linearity

X Axis :  $\pm 1.5\%$ ↓

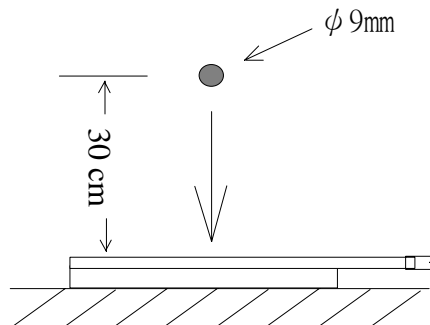
Y Axis :  $\pm 1.5\%$ ↓

C. Insulation Resistance

$20\text{M}\Omega$ ↑ @ DC25V

## 6.6 Impact Resistance

No damage when  $\phi 9\text{mm}$  steel ball is dropped on the surface from 30cm height at 1 time.



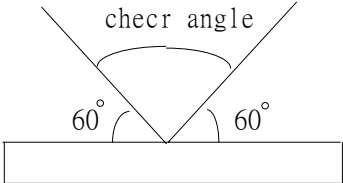
AMEND NO		<b>TOP-TOUCH ELECTRONICS CO., LTD</b>	APPROVAL BY	CHECK BY	PREPARE BY
AMEND DATE					
PUBLISH DATE					

	<b>Touch Panel Specification</b>	<b>Issue No.</b>	
<b>SET</b>	<b>Appearance Inspection Standard</b>	<b>Page</b>	<b>7</b>

**7. Appearance**

7.1 Inspection condition

- (A).The lightness of place: 500 LUX
- (B)The distance of eyeshot:30 CM(The panel must be checked under the light transparency condition.)
- (C)The angle of eyeshot: >60°
- (D)The light source of place : natural sunlight.



7.2 Inspection Standard

Suitable in the visible area. Except dot space.

1. Spot, otherness	$\phi \cong 0.15\text{mm}$	Ignorance
	$0.15\text{mm} \cong \phi \cong 0.25\text{mm}$	$\cong 2$
	$\phi > 0.25\text{mm}$	NG
2. Scratch	$w \cong 0.05\text{mm}$ and $L \cong 2.0\text{mm}$	Ignorance
	$w \cong 0.05\text{mm}$ $2.0\text{mm} < L \cong 4.0\text{mm}$	2 or less & distance > 5mm
	$W > 0.05\text{mm}$ or $L > 4.0\text{mm}$	NG
3. Cicatrices (Line) L: Length W: Width	$W \cong 0.03\text{mm}$	Ignorance
	$L \cong 4\text{mm}$ & $0.03\text{mm} \cong W \cong 0.05\text{mm}$	$\cong 2$ 2 line distance $\cong 10\text{mm}$
	$W > 0.05\text{mm}$	NG
4. Edge warp	Edge warp $\cong 3\text{mm}$	allowable
	Edge warp $\cong 2\text{mm}$	allowable

7.3 Quality inspection standard:

Adapt to AQL MIL-STD-105D

Samples inspection QTY: according to AQL MIL-STD-105D( Charter I)

Inspection Base: according to AQL MIL-STD-105D(Charter II)

- Broken seriously(othersness, scrape)0.01% --- Cr ( Critical Defect)
- Obvious(othersness, scrape)0.65% ----- Ma(Major Defect)
- Not obvious(othersness, scrape)2.5% ----- Mi( Minor Defect)

AMEND NO		<b>TOP-TOUCH ELECTRONICS CO., LTD</b>	APPROVAL BY	CHECK BY	PREPARE BY
AMEND DATE					
PUBLISH DATE					

	<b>Touch Panel Specification</b>		<b>Issue No.</b>		
<b>SET</b>	<b>Packing &amp; Others</b>		<b>Page</b>	<b>8</b>	
<p><b>8.Packing Detail</b></p> <p>8.1 Packing: Can't have otherness on panel. Pack with EPE material.</p> <p>8.2 Delivery: For Avoiding the badly affect to the product quality, shouldn't delivery in the situation of high humidity and unusually high or low temperature</p> <p><b>9.Others</b></p> <p>(1) If there is any question in specification , the decision depends on conferment between manufacturer and customer.</p> <p>(2) If there is any change in specification , can't actualize without document permit.</p> <p>(3) The specification content is different from the individual specification one, decision bases on the latter.</p>					
<b>AMEND NO</b>		<b>TOP-TOUCH ELECTRONICS CO., LTD</b>	<b>APPROVAL BY</b>	<b>CHECK BY</b>	<b>PREPARE BY</b>
<b>AMEND DATE</b>					
<b>PUBLISH DATE</b>					